

Asahi**KASEI**

Rheo**filter**TM

ER-4000



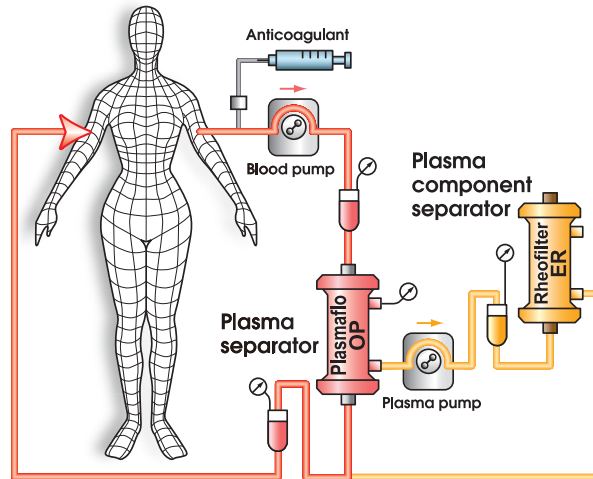
Plasma component separator
specifically designed for double filtration
plasmapheresis "RheopheresisTM"
to treat microcirculatory disorders

- *Sharp Cut-off curve*
- *Removal of high molecular weight proteins*
- *Gamma Sterilized / ETO Free*

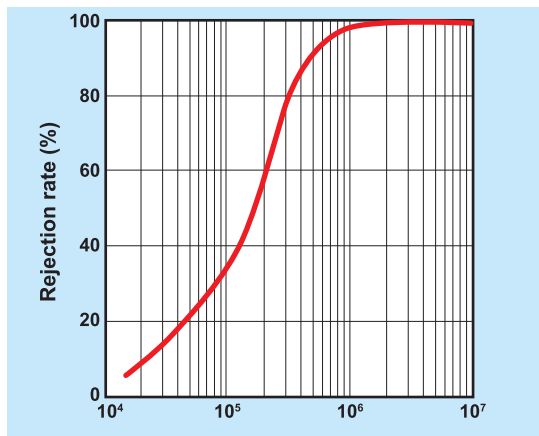
ASAHI KASEI MEDICAL CO., LTD.
A Pioneer in Blood Purification

Rheofilter ER is used as part of an extracorporeal double filtration (membrane differential filtration) system in combination with a plasma separator (plasmaflo) for selective extracorporeal plasma therapy, e.g. Rheopheresis.

Circuit Diagram

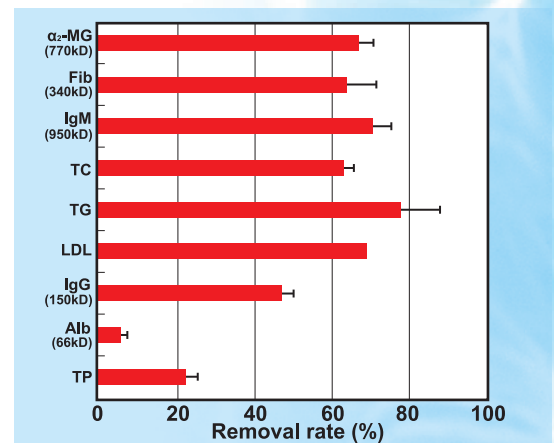


Cut off Curve of Rheofilter ER



in vitro data (1.0L plasma filtration)
 Plasma flow rate: 30mL/min
 Discard flow rate: 6mL/min

Removal Rate of plasma components with Rheofilter ER



Conditions : *in vivo* data
 Sampling : whole blood (pre/post treatment)
 Blood flow rate : 100mL/min
 Plasma flow rate : 25mL/min
 Discard flow rate : 2.5mL/min
 Treated plasma volume : 2.5L
 (Data from shinseikai Daiichi Hospital, Japan)

Specifications

Hollow fiber	Material	Ethylene vinyl alcohol copolymer
	Inside diameter	175µm
	Wall thickness	40µm
	Effective surface	2.0m ²
Container	Material	Polycarbonate
	Dimensions	280mm[L] x 53mm[D]
Sterilization		Gamma-Ray

AsahiKASEI

Distributor:
ASAHI KASEI MEDICAL CO., LTD.
 1-1-2 Yurakucho, Chiyoda-ku, Tokyo 100-0006 Japan
 TEL: +81-3-6699-3771 FAX: +81-3-6699-3773
 www.asahikasei-medical.com

Represented in Europe by:
ASAHI KASEI MEDICAL EUROPE GmbH
 Herriotstrasse 1, 60528 Frankfurt am Main Germany
 TEL: +49 (0) 69 66 37 15 00 FAX: +49 (0) 69 6 66 51 93

Rheofilter and Rheopheresis are registered trademarks of Asahi Kasei Medical Co., Ltd. in EU.

Manufacturer:
KAWASUMI LABORATORIES, INC.
 Shinagawa Intercity Tower B,2-15-2, Konan, Minato-ku,
 Tokyo 108-6109 Japan

CE 0123